



It shall apply from: 21-06-2019 r.

**THE ASSEMBLY INSTRUCTION OF:
QUARTER-PIPE 2,4m
PRODUCT CODE: 142470**



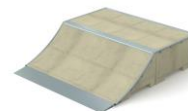
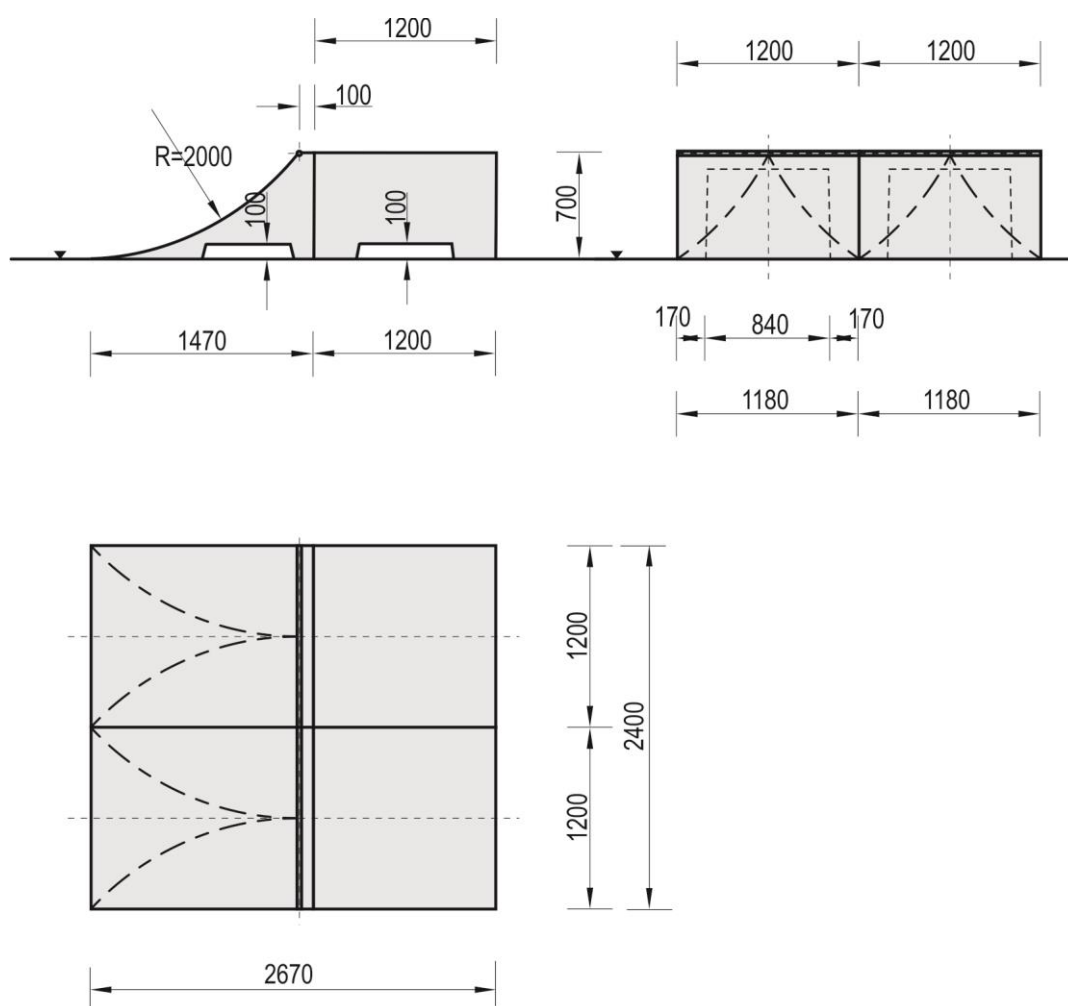


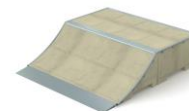
TABLE OF CONTENTS

INTRODUCTION	2
ETAP 1 – Preparatory work – safety zone	3
STAGE 2 – Assembly of the construction	3
1. List of components	3
2. Assembly scheme	4

INTRODUCTION

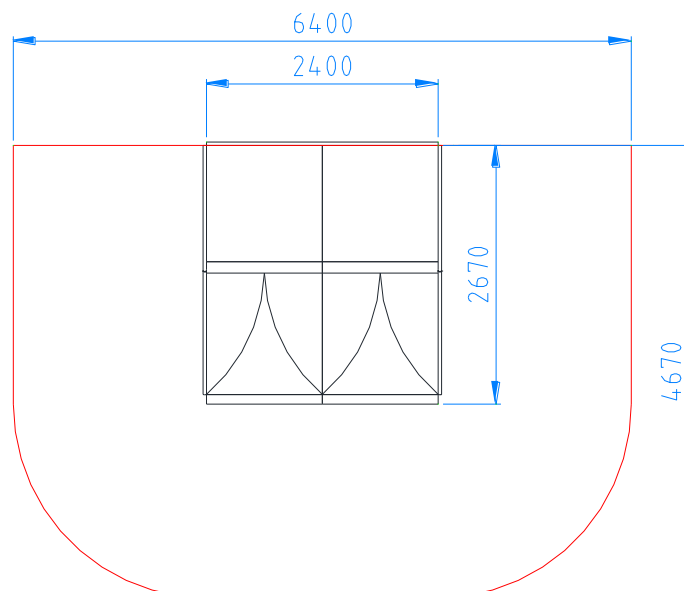
- Overall dimensions: 2,40 x 2,67 x 0,70m





ETAP 1 – Preparatory work – safety zone

- Secure the assembly site to keep others at a distance
- Set the construction in a designated place having regard to required impact area.



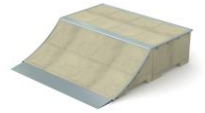
WARNING!

Installation shall be performed in accordance with safety & health standards

STAGE 2 – Assembly of the construction

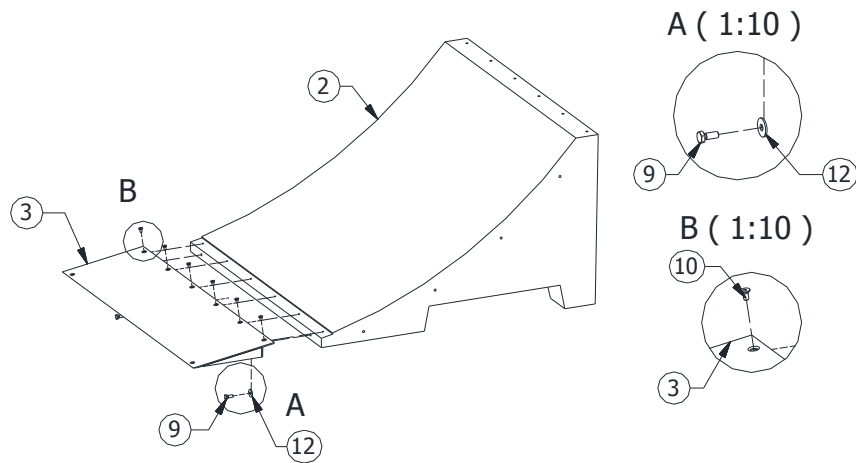
1. List of components

NO	NAME OF COMPONENT	DIMENSIONS	QTY.	NORM
1	Box 700 2S	1200x1200x700	2	
2	Ramp 700		2	
3	Stainless steel toe plate for Ramp	350x1200	2	SN.350.000
4	Side rail for Box-Ramp		1	SP.BX.005 L
5	Side rail for Box-Ramp		1	SP.BX.005 R
6	Double top rail for Box		1	SP.BX.007
7	Side rail for Ramp 700		2	SP.RP.005
8	Ramp-Box 700 connector	1 200x145x5	2	SP.Ł.105
9	Hexagon head screw	M10 x 25	20	DIN 933
10	Countersunk screw torx	TX45 - M8 x 16	12	ISO 14581
11	Countersunk screw	M10 x 20	36	DIN 7991
12	Washer	Ø30xØ10,5x2,5 (M10)	20	DIN 9021
13	Plastic expansion bolt	Ø10x80	4	

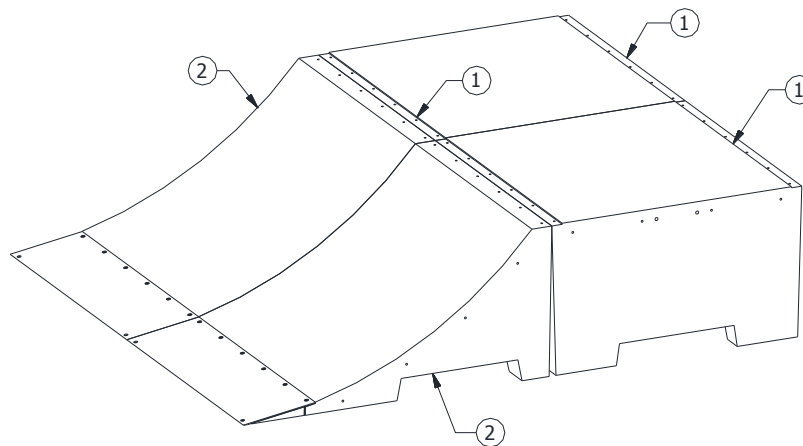


2. Assembly scheme

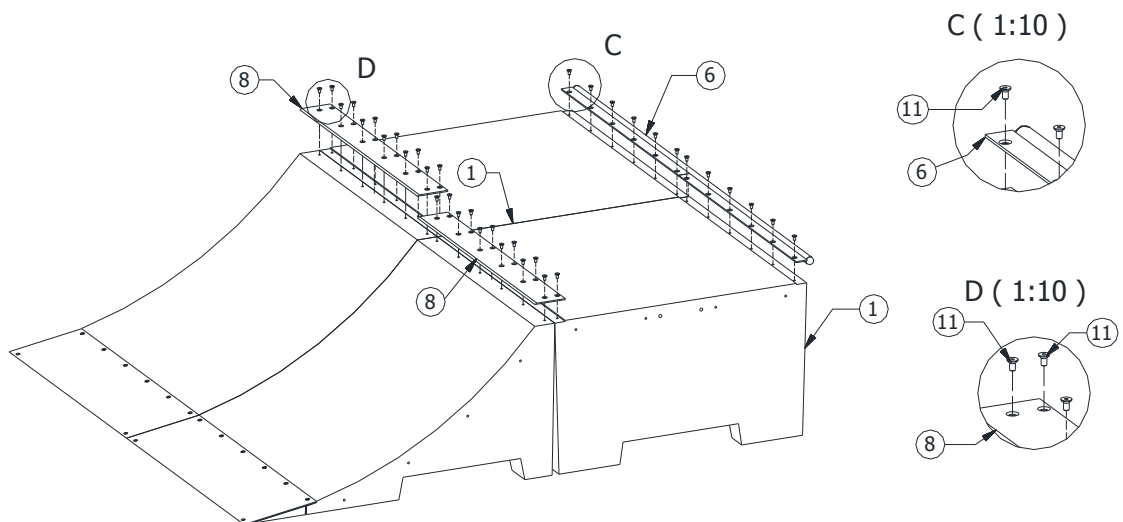
- Screw the steel toe plate (point 3) to the Ramp (point 2).



- Set the concrete elements in a right place, according to the figure below:

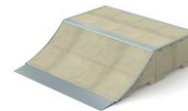


- Screw the connecting sheet metal plates (point 6 and 8) by using countersunk screws of point 11.

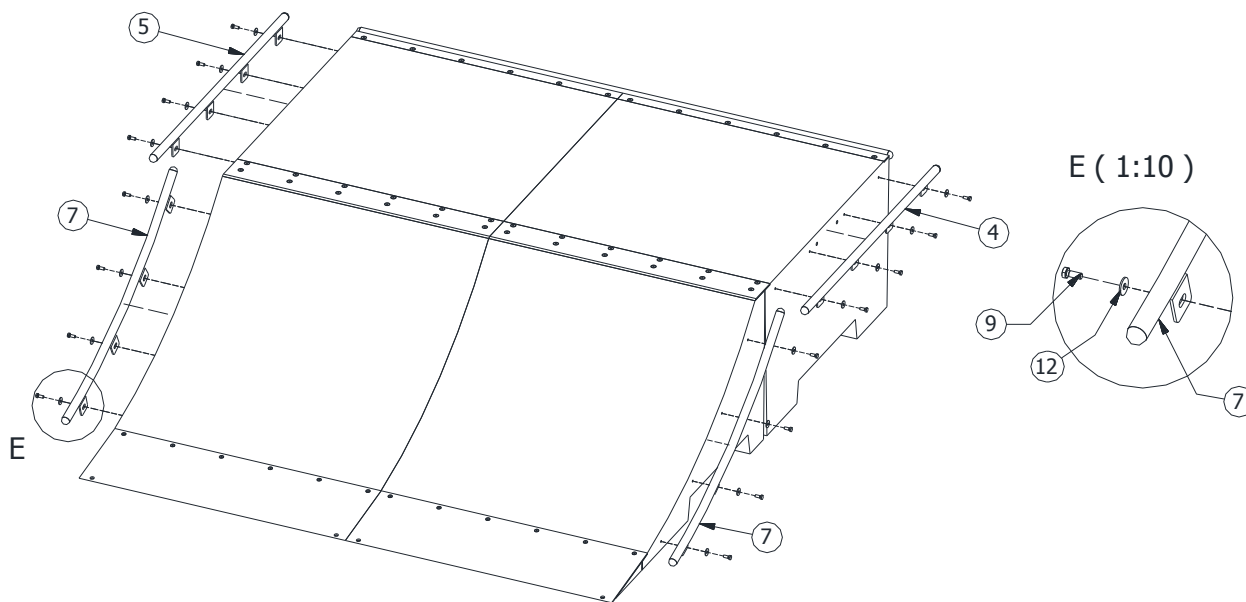


ASSEMBLY INSTRUCTION

Product name: 142470 Quarter Pipe 2,4m



- Screw the side rail (point 4, 5 and 7) to the concrete elements by using screws and washers of point 9 and 12.



- Fix the steel toe plates (point 6,7) to the ground by using plastic expansion bolts of point 13.
- Remove the slacks in joints.
- Put the statutory plate.