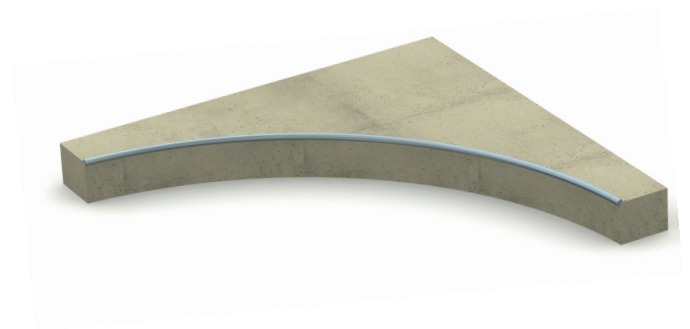
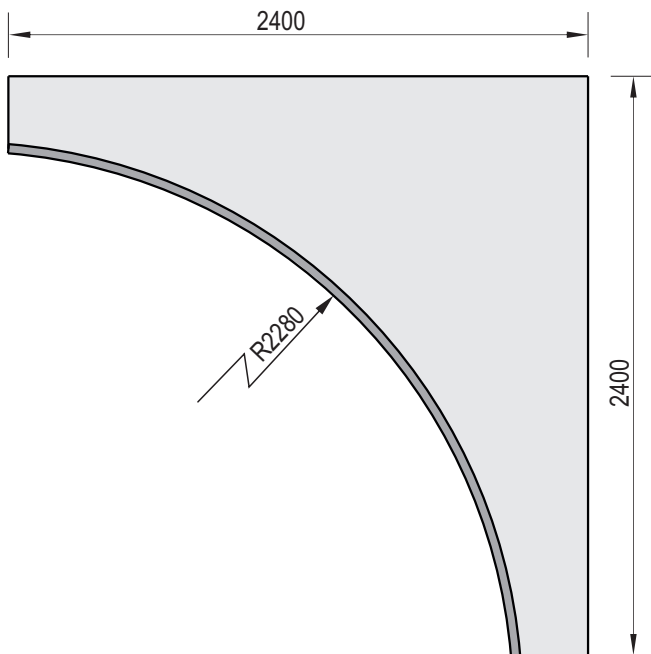
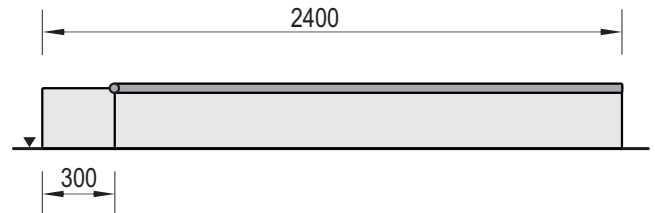
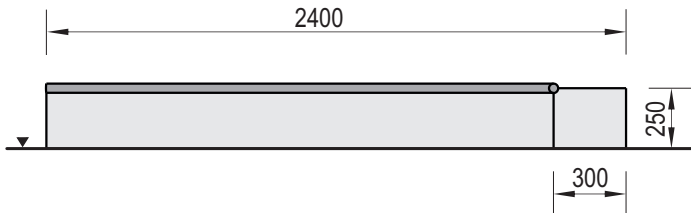


Technical Data Sheet



Product name: Ollie-Box Rounded	Date create: 2021-10-05	Code: 181240	Destination: Skate Park	Scale: 1:25
Construction materials: Concrete od class C 25/30, hot dip galvanized steel	Weight: 740 kg	Notes:		



Technical description:

- Construction made of concrete class C 25/30 and hot dip galvanized steel
- All steel elements are protected against corrosion
- Side rail made of pipe $\varnothing 35 \times 2$ mm. Ends of pipe secured with end caps.
- Ollie-Box Rounded can be mounted as a standalone device or as a component of bigger skate park set
- Concrete elements are protected against water conditions effect by impregnation and painted with acrylic paint PILBET

WARNING ! The equipment shall be used in accordance with its intended purpose