



It shall apply from: **11-10-2018 r.**

THE ASSEMBLY INSTRUCTION OF:
Ollie Box Three-Piece
PRODUCT CODE: **181250**



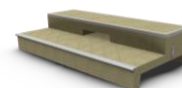
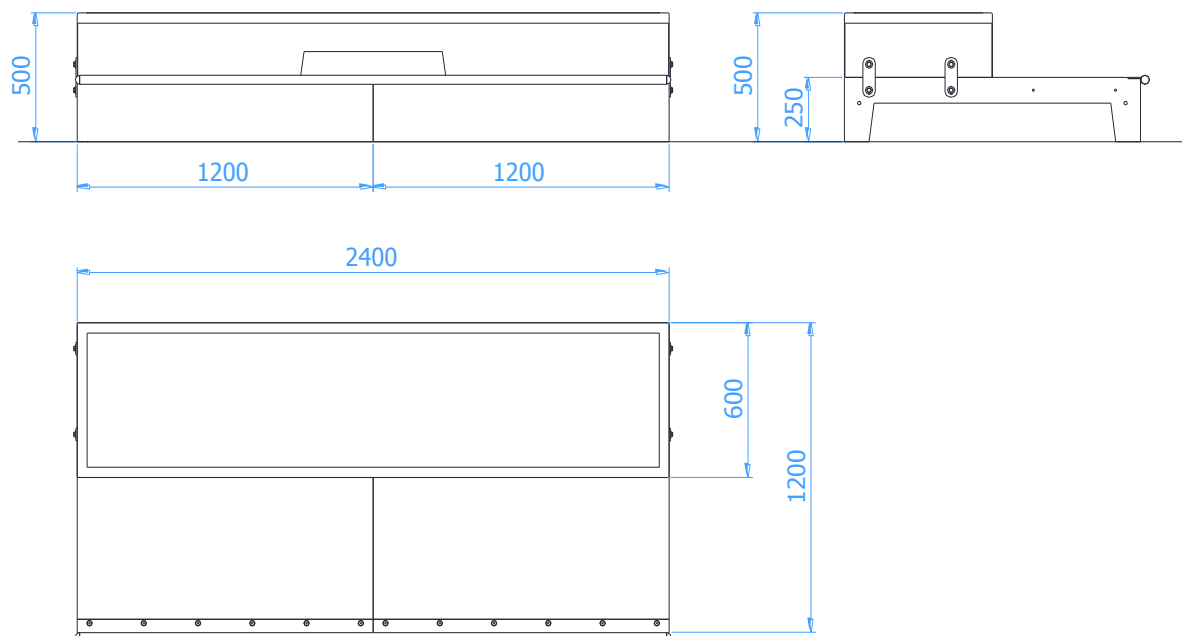


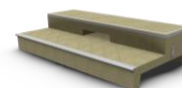
TABLE OF CONTENTS

INTRODUCTION	2
STAGE 1 – Preparatory work	3
STAGE 2 – Assembly of the construction	3
1. List of components	3
2. The assembly scheme	4

INTRODUCTION

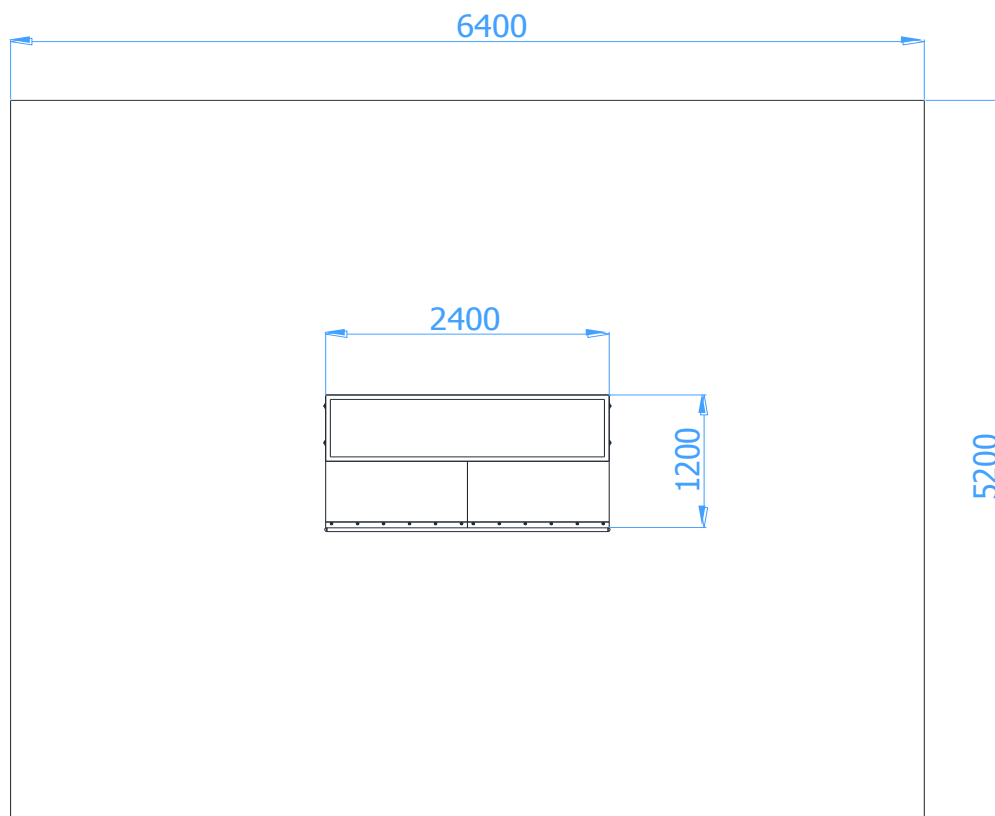
- Overall dimensions: 2,40 x 1,20 x 0,5 m





STAGE 1 – Preparatory work

- Secure the assembly site to keep others at a distance
- Set the construction in a designated place having regard to required impact area.



WARNING!

Installation shall be performed in accordance with safety & health standards

STAGE 2 – Assembly of the construction

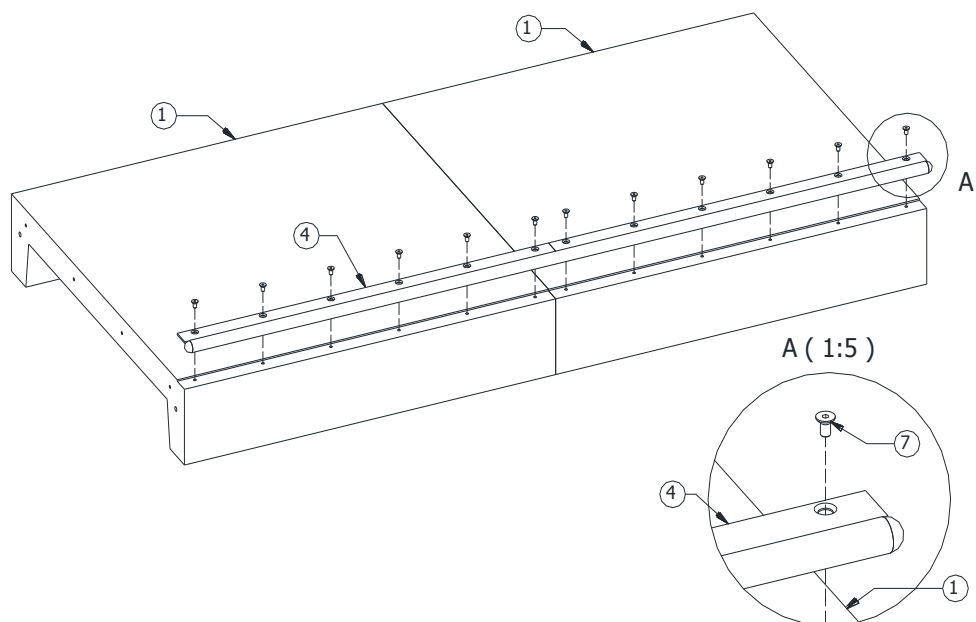
1. List of components

No.	Name of component	Dimension	Qty.	Norm
1	Box 250 1S	120x120x250	2	
2	Ollie top unit	600x250x2 400	1	
3	Ollie box connector	153x50x5	4	SP.Ł.104
4	Box metal coping		1	SP.BX.007
5	Washer	∅30x∅10,5x2,5 (M10)	8	DIN 9021
6	Hexagon head screw	M10 x 25	8	DIN 933
7	Countersunk screw	M10 x 20	12	DIN 7991

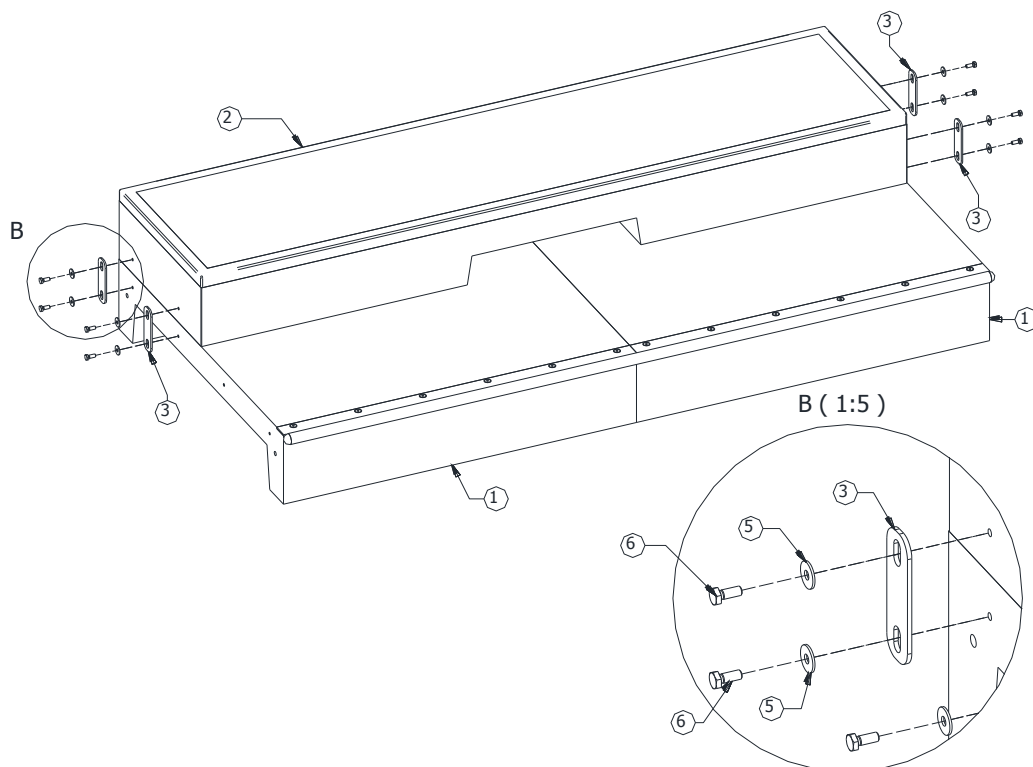


2. The assembly scheme

- Set the concrete elements Box (point 1) in designated place. Screw the metal coping (point 4) to the concrete (point 1) with the countersunk screw (point 7)



- Put the Ollie top unit (point 2) on concrete elements Box (point 1). Screw the top unit (point 2) to the lower concrete part with connectors (point 3) and the screws with washers (point 5, 6)



- Remove the slacks in joints
- Put the statutory plate