

Technical Data Sheet



Product name:

Ollie-Box Rounded

Construction materials:

Concrete od class C 35/45, hot dip galvanized steel

Date create:

2021-10-05

Weight:

740 kg

Code:

181240

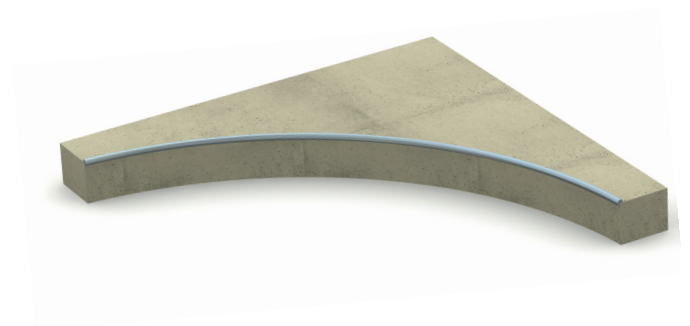
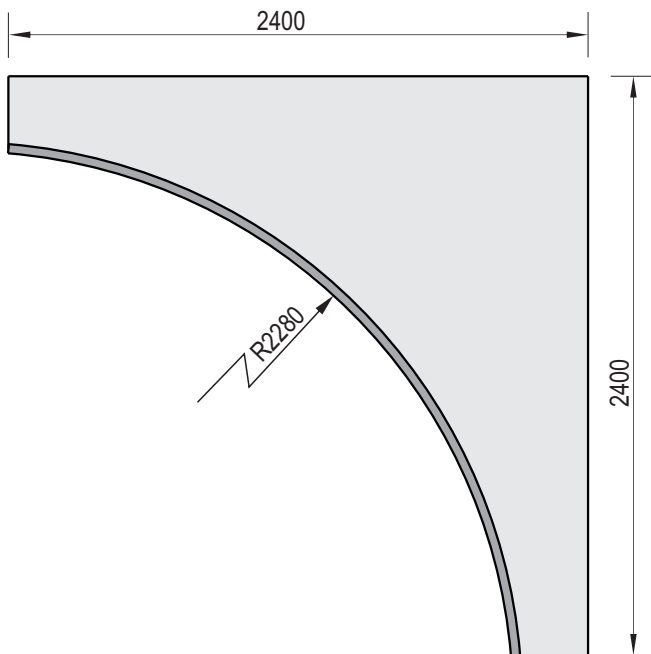
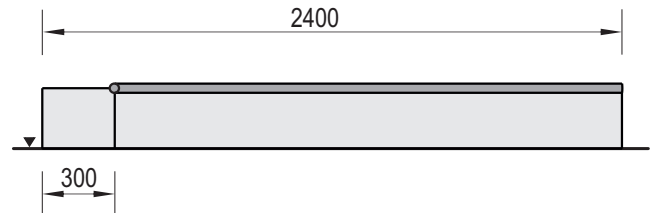
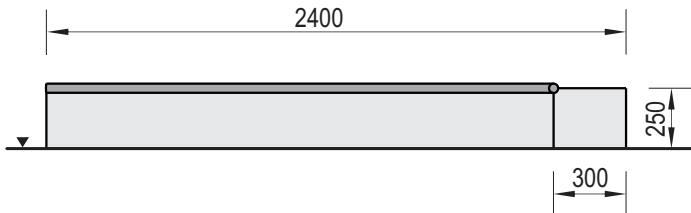
Notes:

Destination:

Skate Park

Scale:

1:25



Technical description:

- Construction made of concrete class C 35/45 and hot dip galvanized steel
- All steel elements are protected against corrosion
- Side rail made of pipe $\varnothing 35 \times 2$ mm. Ends of pipe secured with end caps.
- Ollie-Box Rounded can be mounted as a standalone device or as a component of bigger skate park set
- Concrete elements are protected against water conditions effect by impregnation and painted with acrylic paint PILBET

WARNING ! The equipment shall be used in accordance with its intended purpose