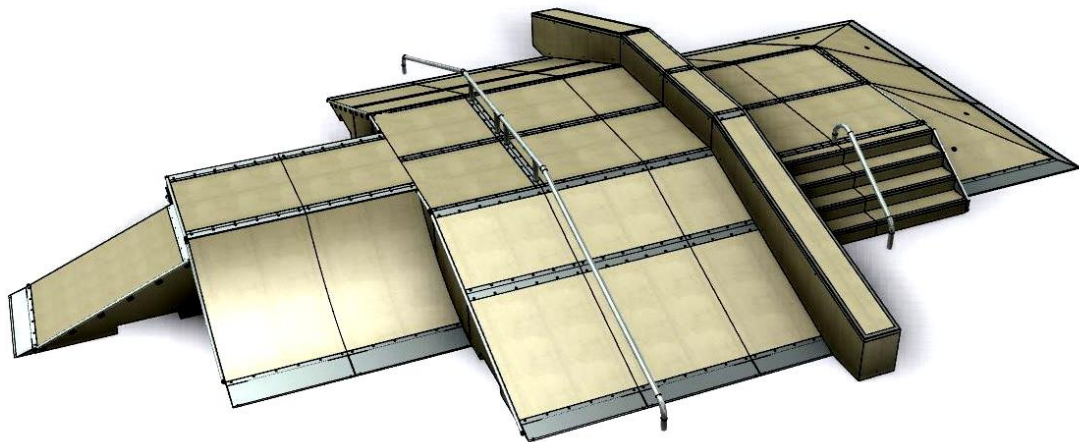




It shall apply from: **08-06-2018** r.

THE ASSEMBLY INSTRUCTION OF:
Fun-Box 11
PRODUCT CODE: 108198



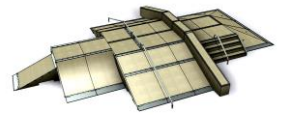
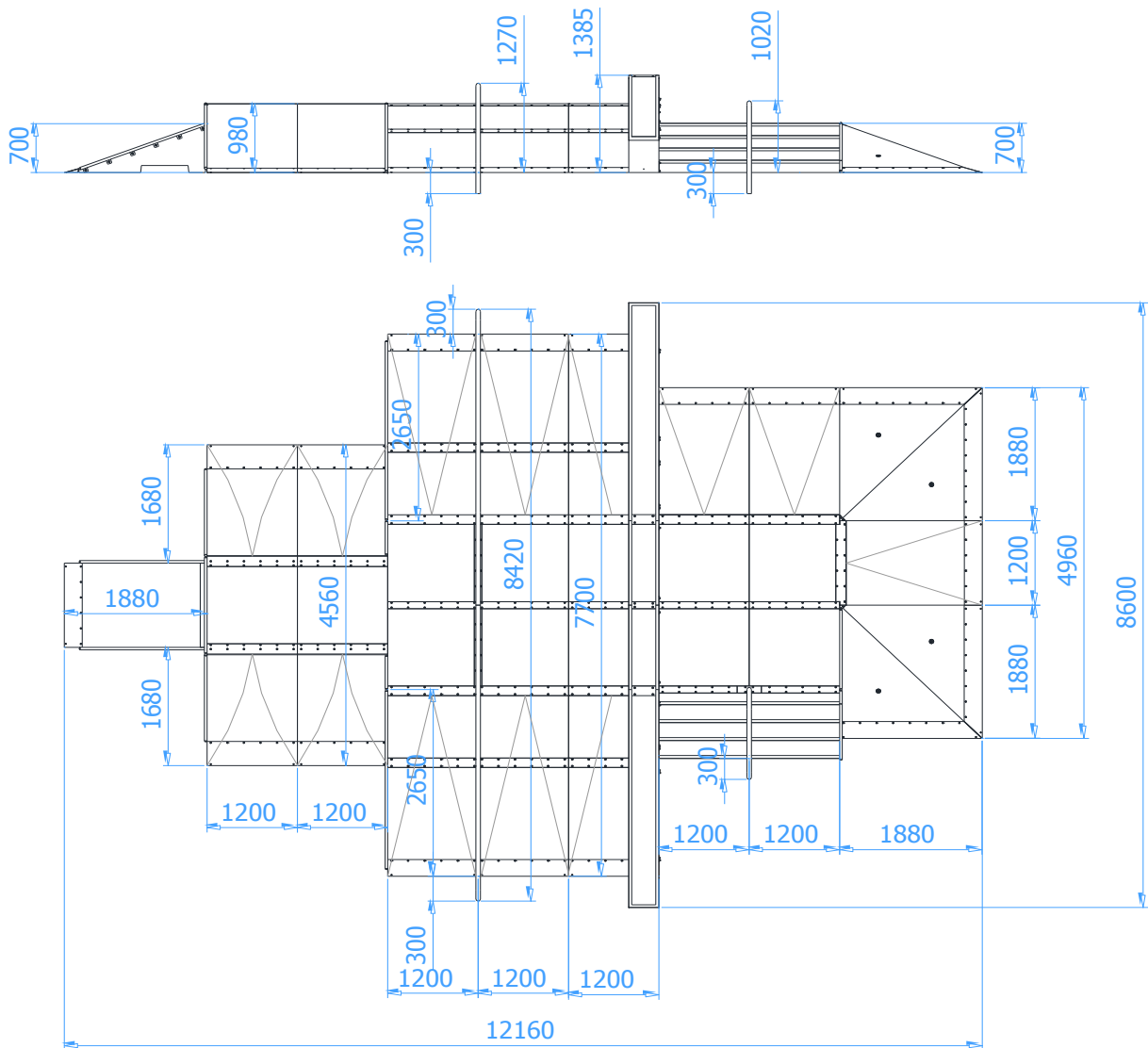


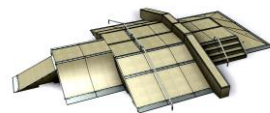
TABLE OF CONTENTS

INTRODUCTION	2
STAGE 1 – Preparatory work/safety zone	3
STAGE 2 – Assembly of the construction	4
1. List of components	4
2. Assembly scheme	5

INTRODUCTION

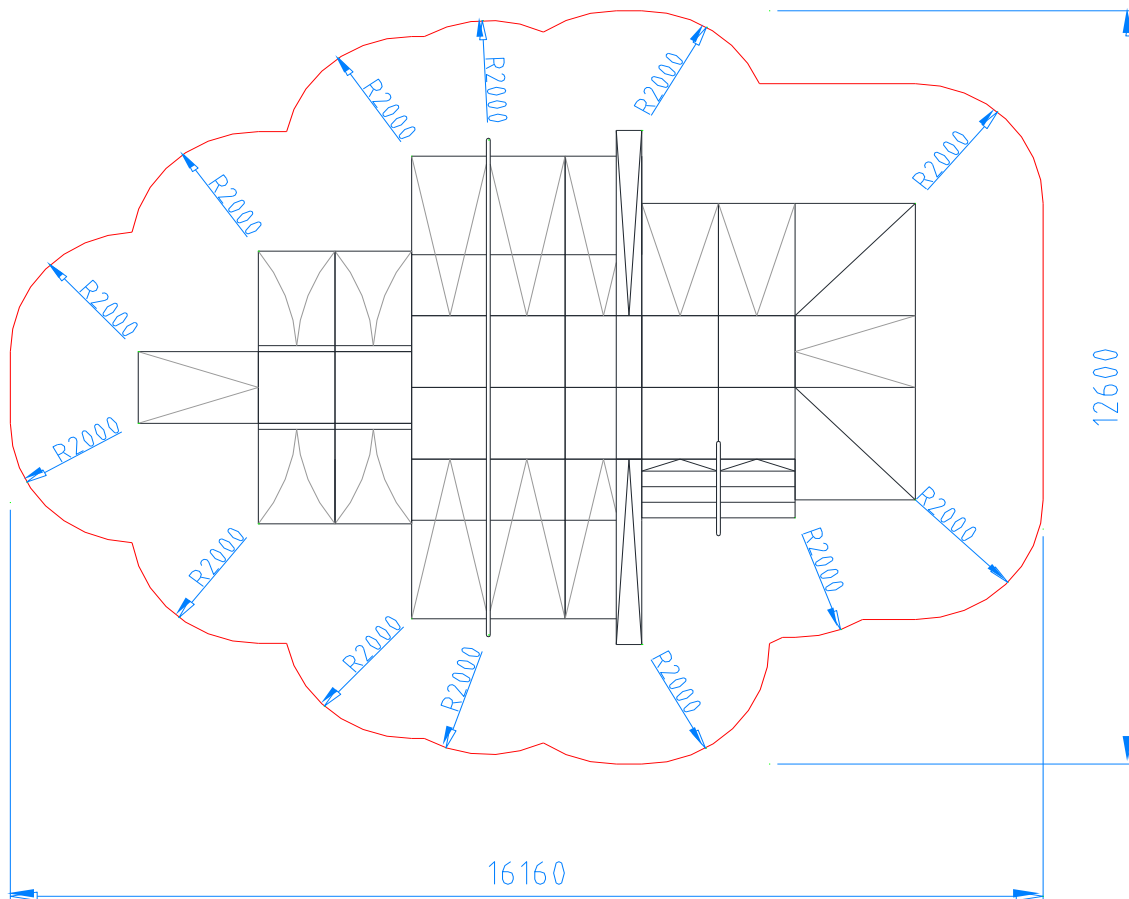
- Overall dimensions: 12,16 x 8,60 x 1,39 m



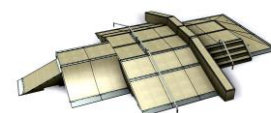


STAGE 1 – Preparatory work/safety zone

- Secure the assembly site to keep others at a distance
- Set the construction in a designated place having regard to required impact area.



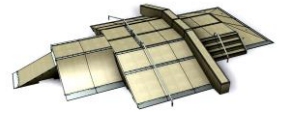
WARNING!
Installation shall be performed in accordance with safety & health standards



STAGE 2 – Assembly of the construction

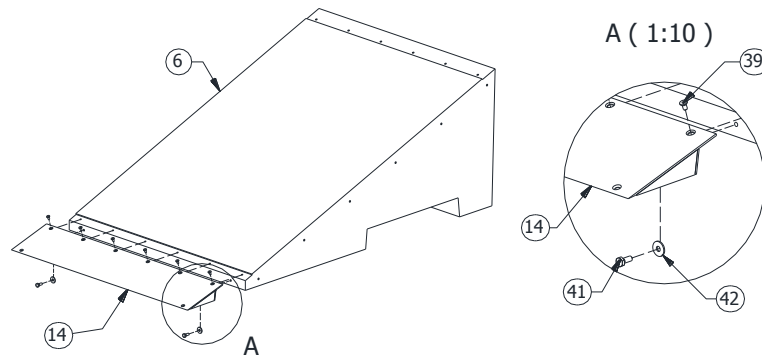
1. List of components

No.	Name of component	Dimension	Qty.	Norm
1	Box 700 2S	1200x1200x700	3	
2	Box 700 3S	1200x1200x700	1	
3	Box 980 2S	1200x1200x980	4	
4	Box 980 3S	1200x1200x980	4	
5	Bank 600		6	
6	Bank 700		3	
7	Bank 700 standalone		1	
8	Additional component for Bank 980		6	
9	Ramp 980		4	
10	Stairs 700		2	
11	Corner		2	
12	Grind box straight	400x400x1200	2	
13	Grind box slanted		2	
14	Steel toe plate for Bank	250x1200	10	SN.250.000
15	Steel toe plate for Ramp	350x1200	4	SN.350.000
16	Steel toe plate for Corner- left	1890x250x4	2	SNC.250L.000
17	Steel toe plate for Corner-right	1890x250x4	2	SNC.250P.000
18	Steel sheet for Bank-Box	139x1200x5	8	SP.Ł.101
19	Steel sheet for Bank-Box	139x1200x5	1	SP.Ł.101 LR
20	Connecting sheet of Box-Box	100x1200x5	5	SP.Ł.100
21	Connecting sheet of Box-Box-Rail	100x1 039x5	2	SP.Ł.109
22	Connector of Bank 980	142x1200x5	6	SP.Ł.102
23	Connector of Ramp-Box 980	1 200x155x5	4	SP.Ł.106
24	Connector of Grind Box straight	320x100x5	1	SP.GB.200
25	Connector of Grind Box slanted	320x140x5	2	SP.GB.300
26	Steel plate for top of the corner		2	SP.CR.001
27	Connector of Olly Box	153x50x5	12	SP.Ł.104
28	Side rail of Bank 700		2	SP.BK.002
29	Side rail of Bank 980		1	SP.BK.003L
30	Side rail of Bank 980		1	SP.BK.003R
31	Side rail of Box short.		1	SP.BX.008 BL
32	Side rail of Box-Ramp		1	SP.BX.005 LR
33	Side rail of 1/2 Box short.		1	SP.BX.009 SL
34	Side rail of 1/2 Box short.		1	SP.BX.009 SP
35	Side rail of Ramp 980		2	SP.RP.006
36	Side rail of Stairs 700		1	SP.SS.001R
37	Rail 980 Bank-2xBox-Bank		1	SP.R98.002
38	Fun Box Rail - stairs		1	SP.R70.GS0.001
39	Countersunk screw - torx	TX45 - M8x16	120	ISO 14581
40	Countersunk screw	M10 x 20	338	DIN 7991
41	Hexagon head screw	M10 x 25	105	DIN 933
42	Washer	Ø30xØ11x2,5 (M10)	105	DIN 9021
43	Plastic expansion bolt	Ø10x80	36	

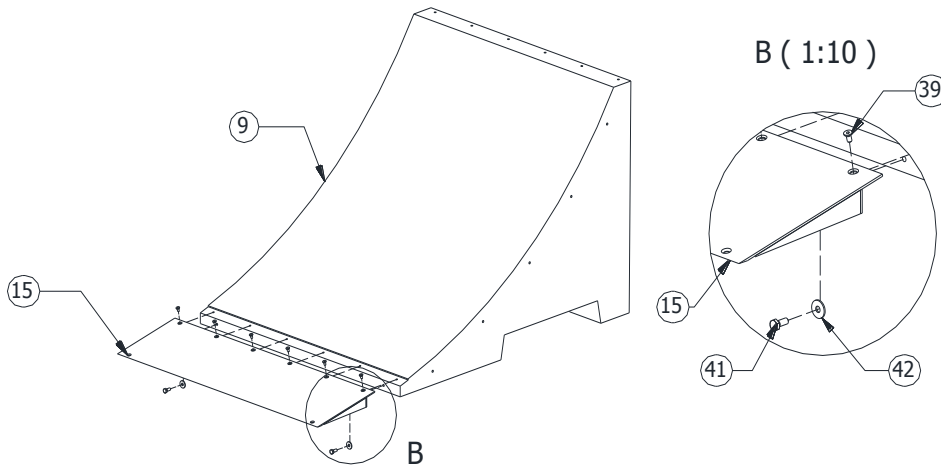


2. Assembly scheme

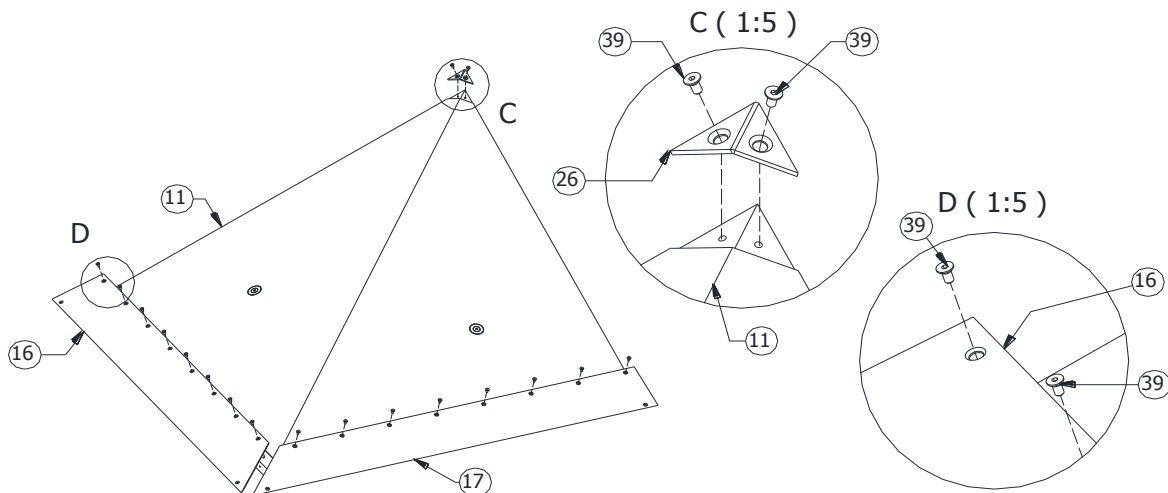
- Screw the toe plates (point 14) to the Banks (point 5, 6, 7) with items of point 39, 41 and 42.



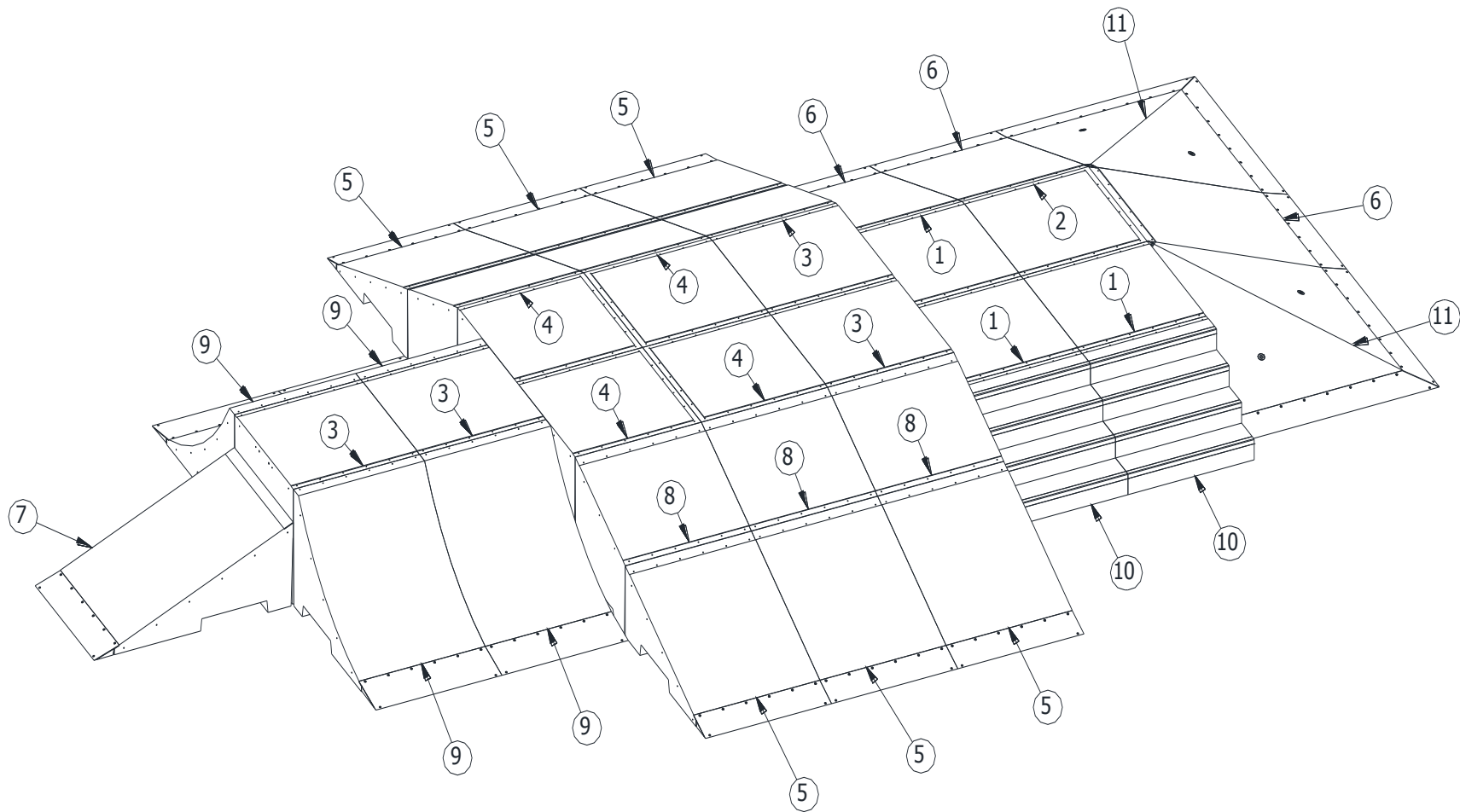
- Screw the toe plates (point 15) to the Ramps (point 9) with items of point 39, 41 and 42.

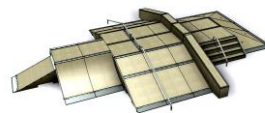


- Screw the toe plates (point 16, 17) to the Corners (point 11) with items of point 39.
- Screw the steel plate (point 26) to the upper surface of the concrete element with items of point 39.

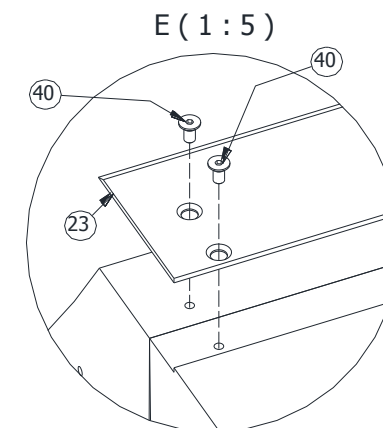
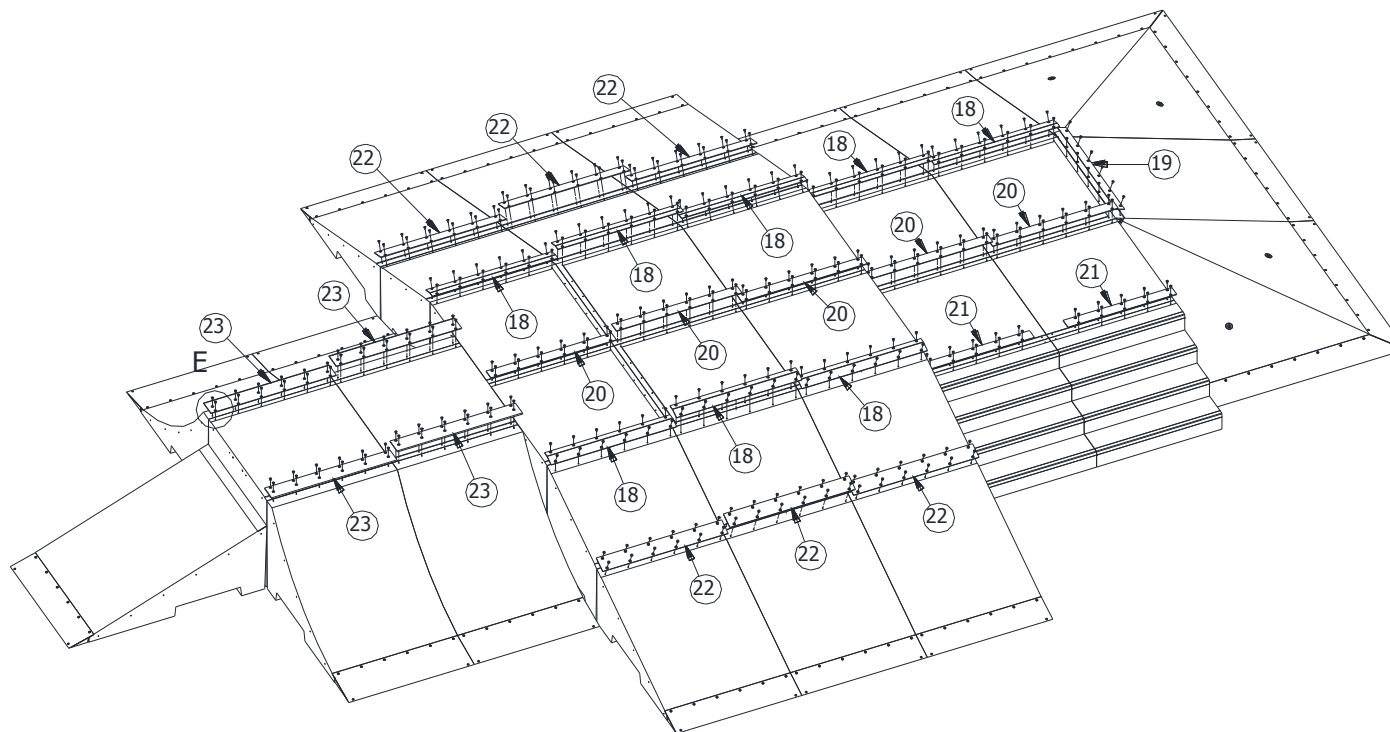


- Set the concrete elements according to the figure below:



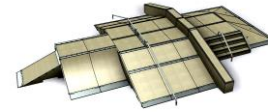


- Connect upper surfaces of the concrete elements by using connecting steel sheets (point 18, 19, 20, 21, 22, 23) and screws of point 40.

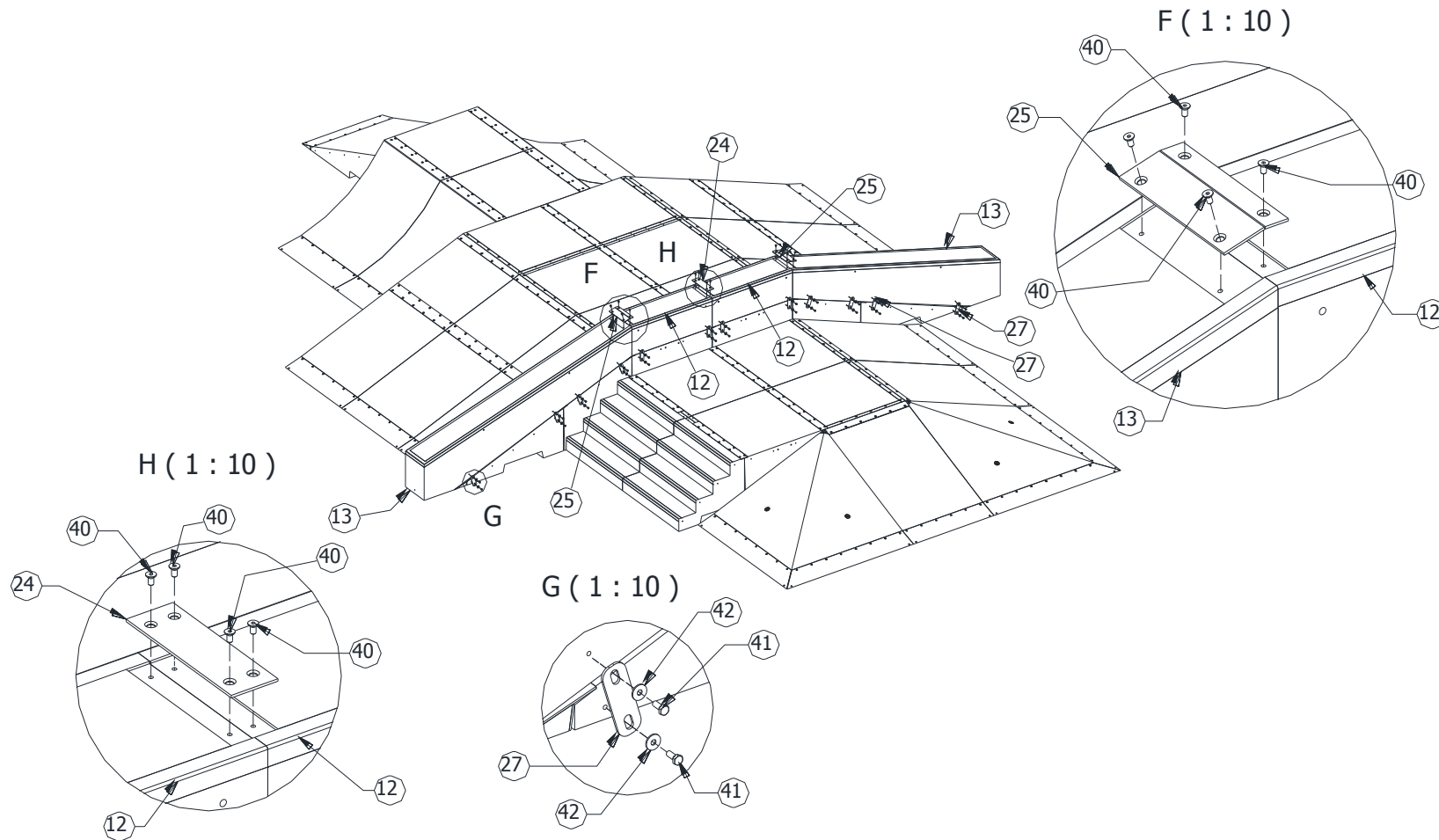


ASSEMBLY INSTRUCTION

Product Code: 108198 Fun-box 11

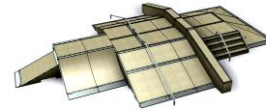


- Set the Grind Boxes (point 12, 13) in an appropriate place. Screw the upper surfaces of the concrete elements mounted before (point 12, 13) by using steel sheets (point 24, 25) and screws of point 40. Additionally screw the straight Grind Box (point 12) to the Boxes (point 3) by using connecting steel sheets (point 27) and screws with washers (point 41, 42).

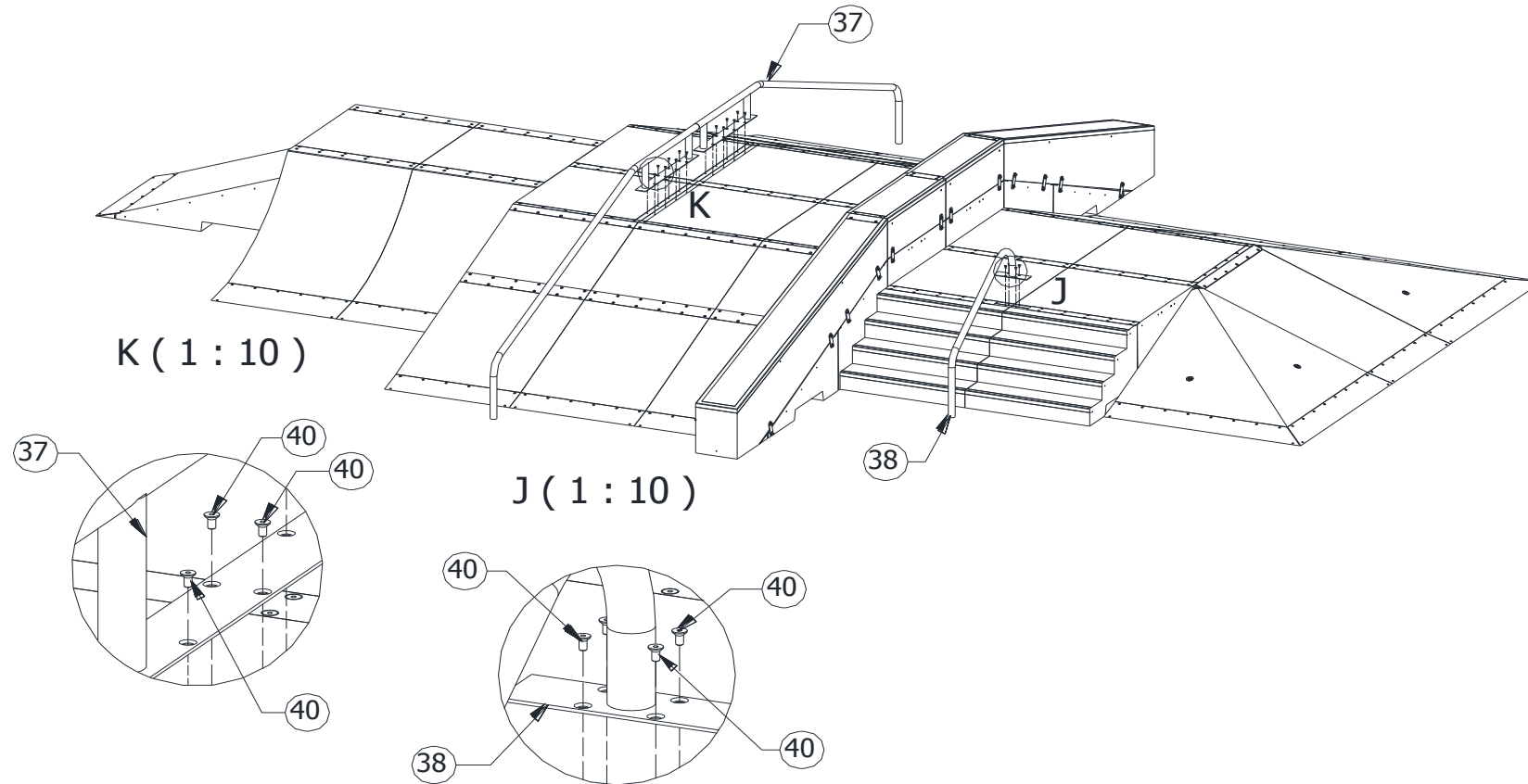


ASSEMBLY INSTRUCTION

Product Code: 108198 Fun-box 11

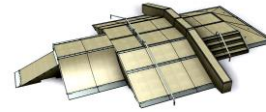


- Prepare excavations for end of the Rail (point 37, 38) in a designated place (approximately 300mm from the edge of the skate park area). Mount the Rails (point 37, 38) to the upper surfaces of the concrete elements by using screws of point 40. The ends of the Rail shall be mounted in the ground and concreted with concrete of class C25/30.

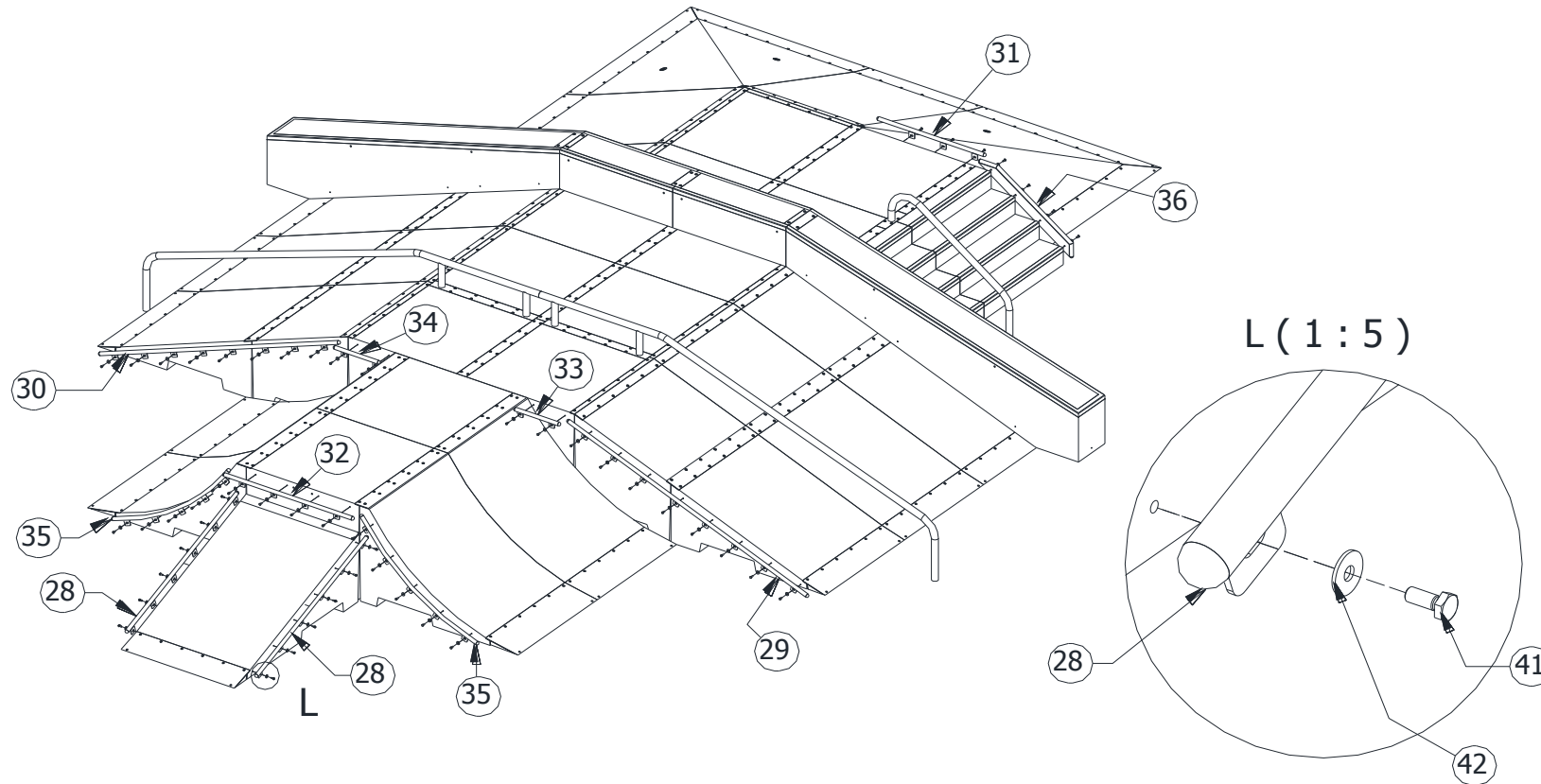


ASSEMBLY INSTRUCTION

Product Code: 108198 Fun-box 11



- Screw the side rails (point 28, 29, 30, 31, 32, 33, 34, 35, 36) by using items of point 41, 42.



- All the corners of the steel toe plates shall be mounted to the ground with the bolts (point 43)
- Remove the slacks in joints
- Put the statutory plate